



Government of Guatemala  
United Nations System and  
Humanitarian Country Team



# Guatemala Food Insecurity and Acute Malnutrition Humanitarian Appeal

March 5, 2010





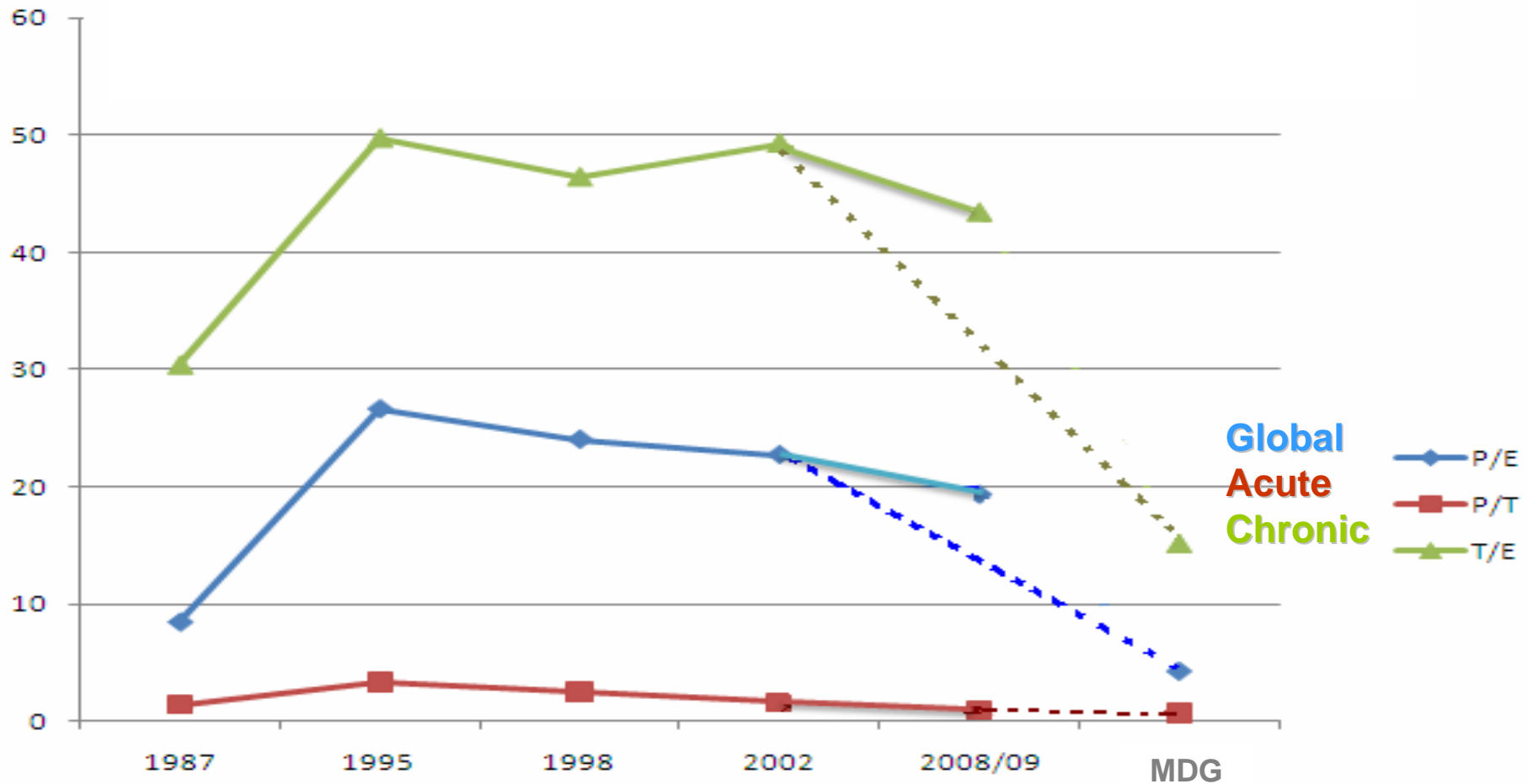
# Contents

1. Malnutrition in Guatemala:  
MDG insufficient progress
2. Guatemala's Climate change risk  
The world economic crisis
3. Impact of drought
4. Humanitarian appeal by cluster





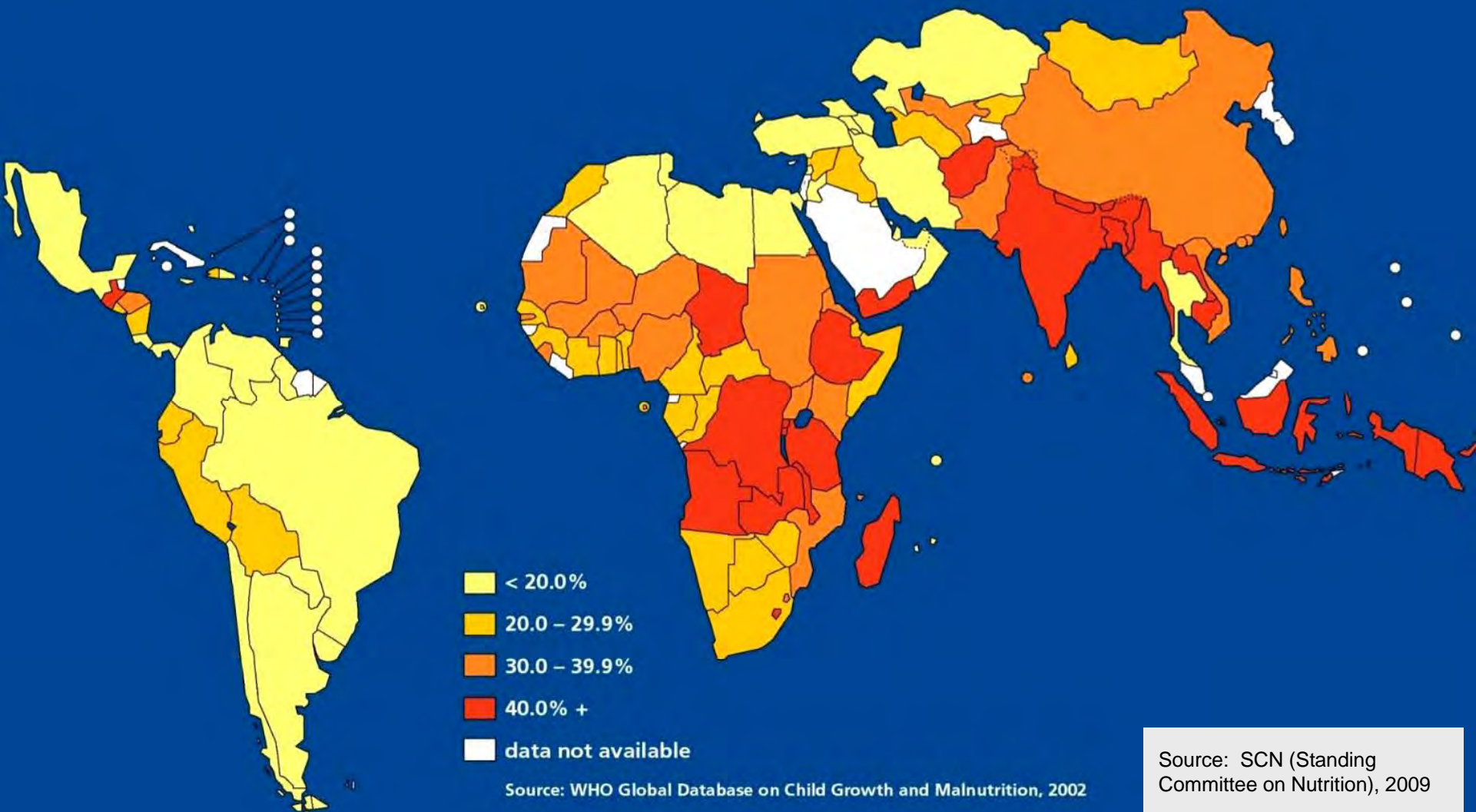
# 1. Malnutrition in Guatemala: insufficient MDG progress



Source: ENSMI 87, 95, 98, 02, 08/09



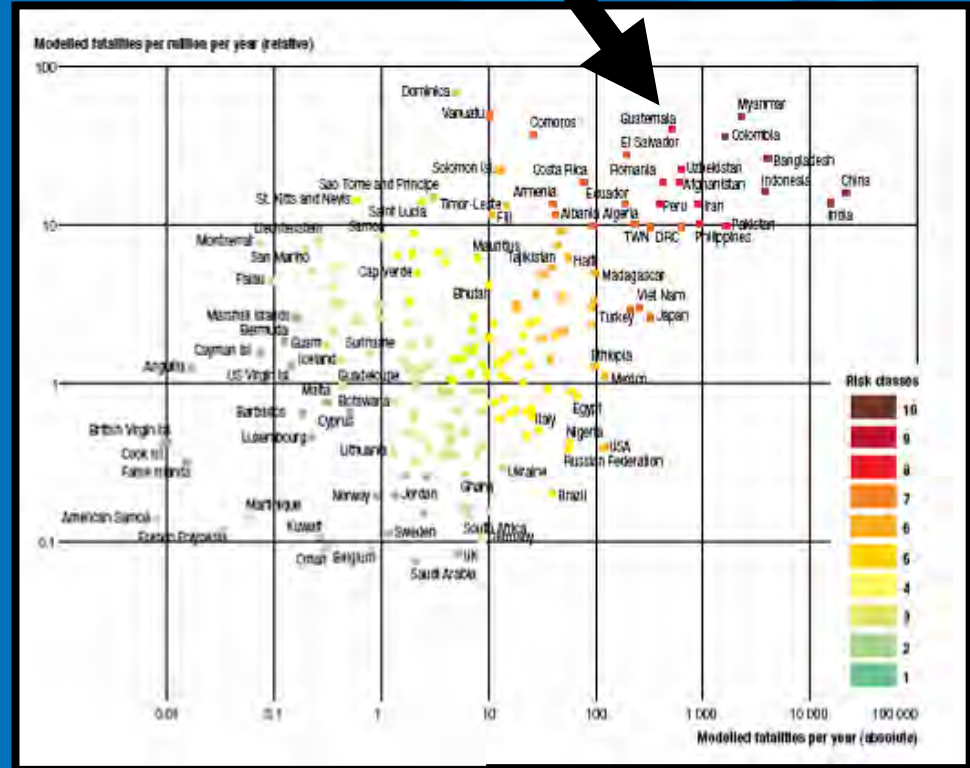
# Prevalence of stunting (chronic malnutrition) of children in developing countries





# 2. Climate Change and Vulnerability

Guatemala has a high risk to climate-related hazards such as droughts and is among the 10 top countries with the highest mortality risk index due to natural disasters



Classes	Absolute risk (average killed per year)	Relative risk (killed per million per year)	Mortality Risk Index (average of both indicators)
10	>3 000	>300	Extreme
9	1 000–3 000	100–300	Major
8	300–1 000	30–100	Very High
7	100–300	10–100	High
6	30–100	3–10	Medium high
5	10–30	1–3	Medium
4	3–10	0.3–1	Medium low
3	1–3	0.1–0.3	Low
2	0.3–1	0.03–0.1	Very Low
1	>0–0.3	>0–0.03	Negligible
0	0	0	Unknown exposure



# Climate Change and Vulnerability

## Climate trends for Guatemala: towards increased aridity and extreme weather events

- Continuing decrease in precipitation.
- Longer, dryer dry seasons.
- Evidence of increase in frequency of extreme weather events.
- Increased risk of drought, floods and landslides due to higher variability of temperatures and precipitation.

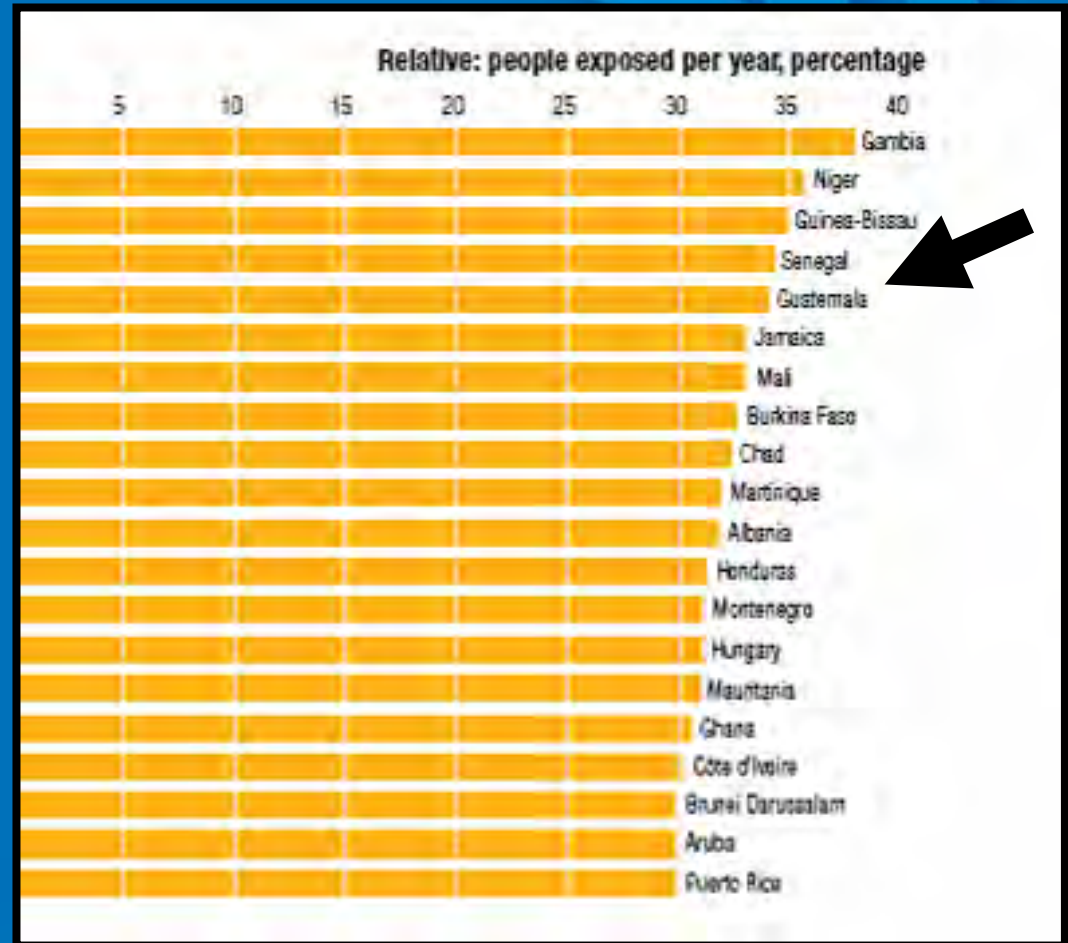


# Climate Change and Vulnerability

## World drought vulnerability

Guatemala has the highest % of people exposed to droughts in the continent

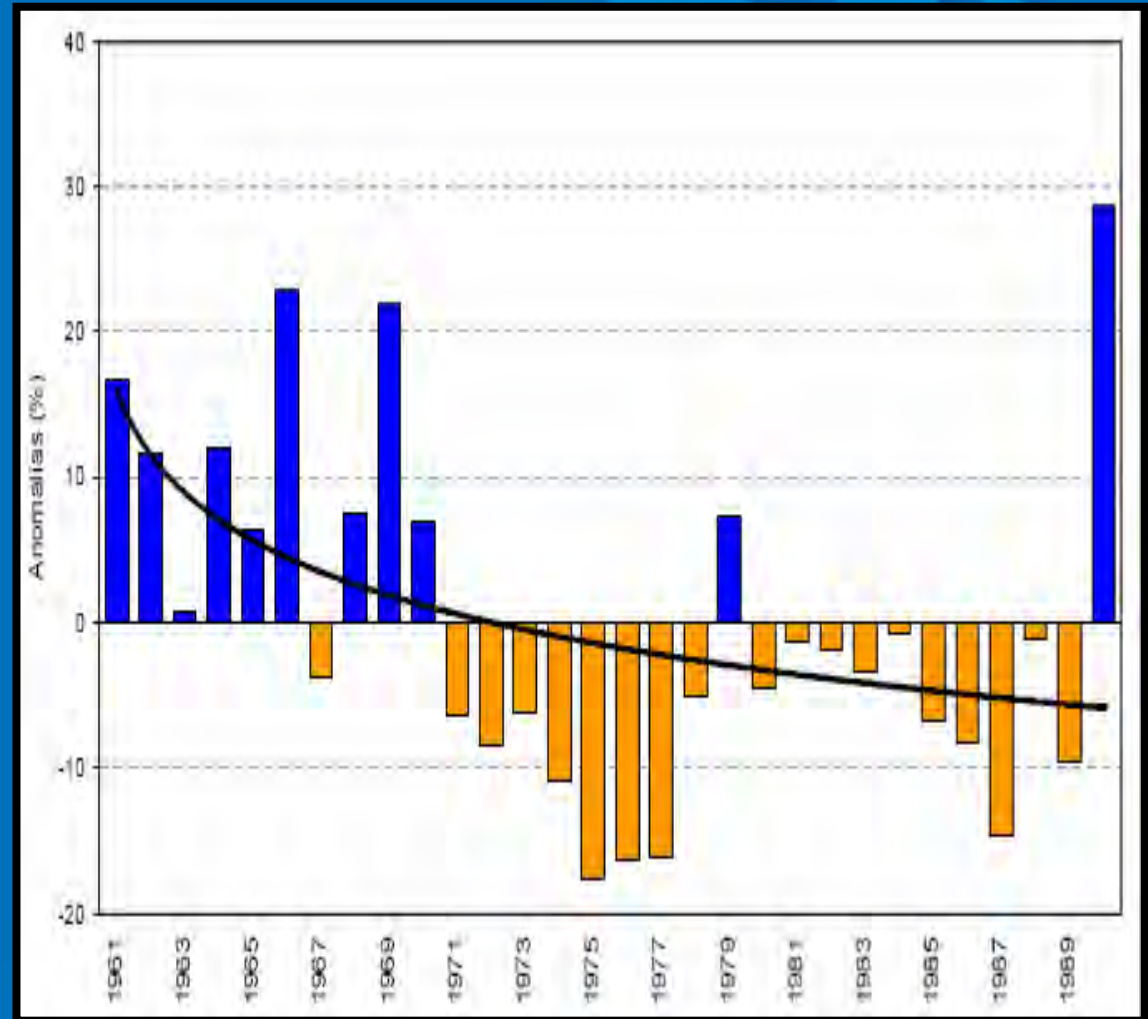
*UNISDR, Global Assessment Report on Disaster Risk Reduction (2009)*





# Climate Change and Vulnerability

Significant trend of reduction of average precipitation in Guatemala



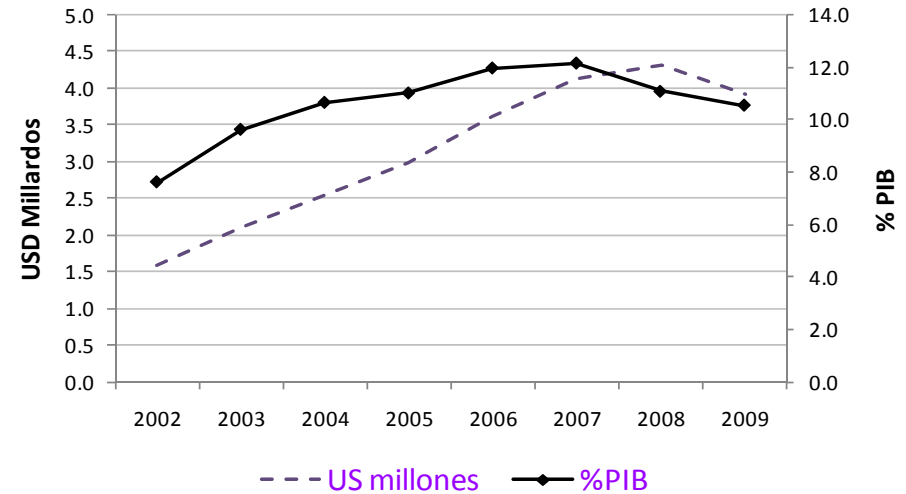
*Guatemala's First National Communication to the UNFCCC (MARN, 2001)*



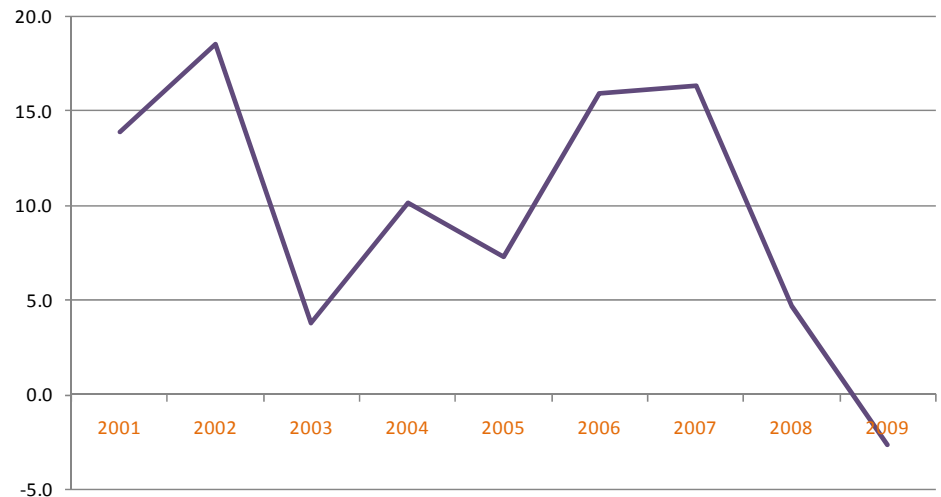
# The world economic crisis

Reduced national income, exports, foreign investments, income from tourism and access to credit, resulting in an increase budget deficit and higher unemployment rates

### Remittances evolution



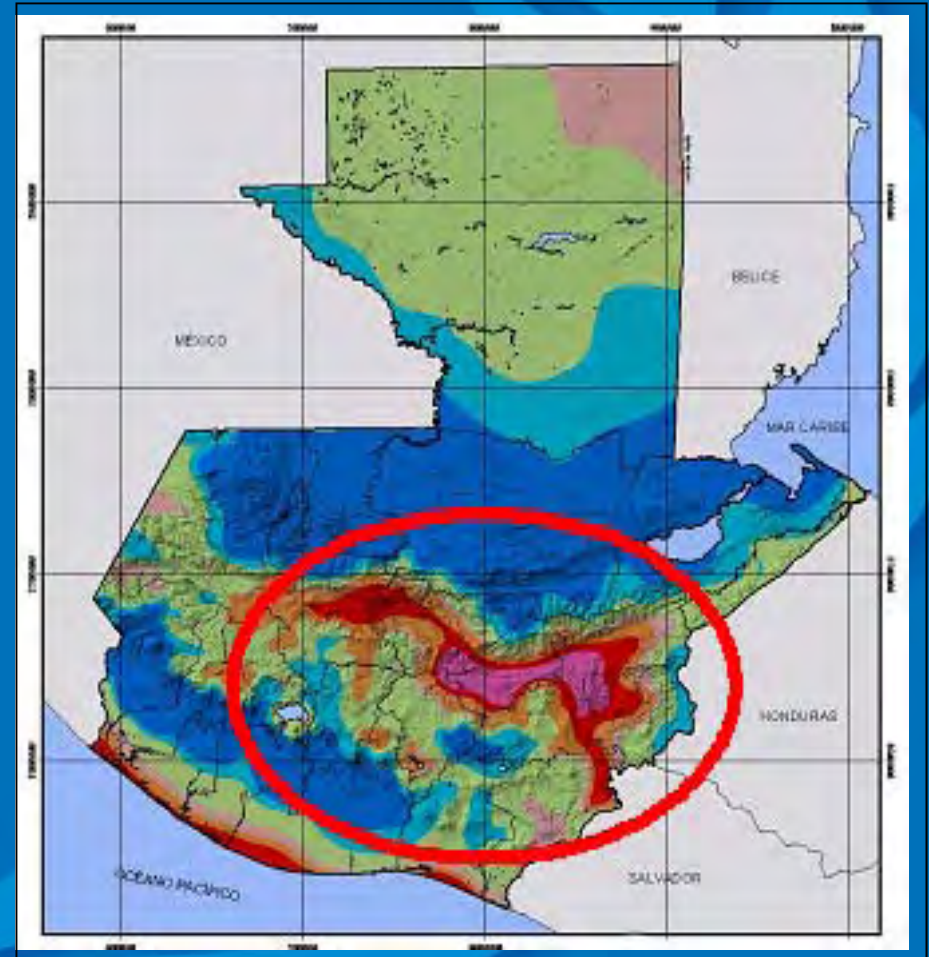
### Tax revenue variations rate





### 3. Drought and malnutrition

Guatemala is being affected by a prolonged drought which has been caused by the *El Niño* phenomenon, particularly in the Dry Corridor





# Rapid assessment results

As a result, there was a rapid increase of mortality of children under 5 years of age due to acute malnutrition, specially of infants <6 months.



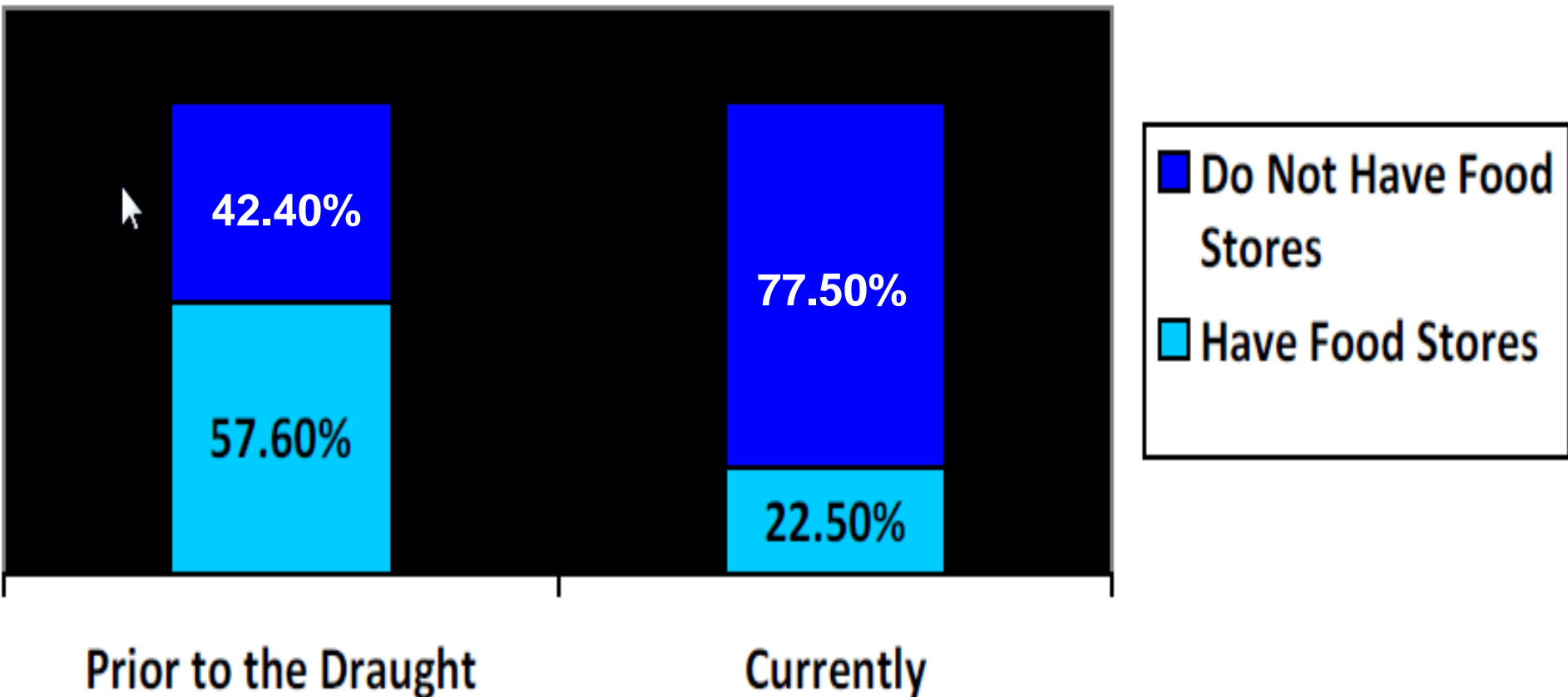
11% of acute malnutrition in children under 5 years of age in the dry corridor



14% of acute malnutrition in woman of child birthing age



- Reduction of access to food and basic services.
- 77.5% of households do not have food reserves.
- Reported loss of between 50% and 100% of maize, beans, sorghum and yucca.





## **4. Humanitarian Appeal**

- Government's Declaration of Public Calamity, September 8, 2009**
- Approx. US\$18 million Government funds allocated to emergency relief - 2009**
  - CERF approval for US\$5 million in October, 2009**
  - US\$26 million mobilized by international community by 2009**



Stabilization of a situation that nevertheless remains critical due to the following reasons:



- -- Acute malnutrition can easily grow in “sea” of chronic malnutrition
- -- 4000 cases of acute malnutrition in Januray 2010
- -- drought will continue and possibly worsen
- -- national budgetary impasse
- -- significant Intl. Cooperation for mid/long term projects but gaps for emergency



# 2010 humanitarian Appeal

## CLUSTERS

**Agriculture**  
**Food**  
**Health**  
**Nutrition**  
**WASH**  
**Early Recovery**

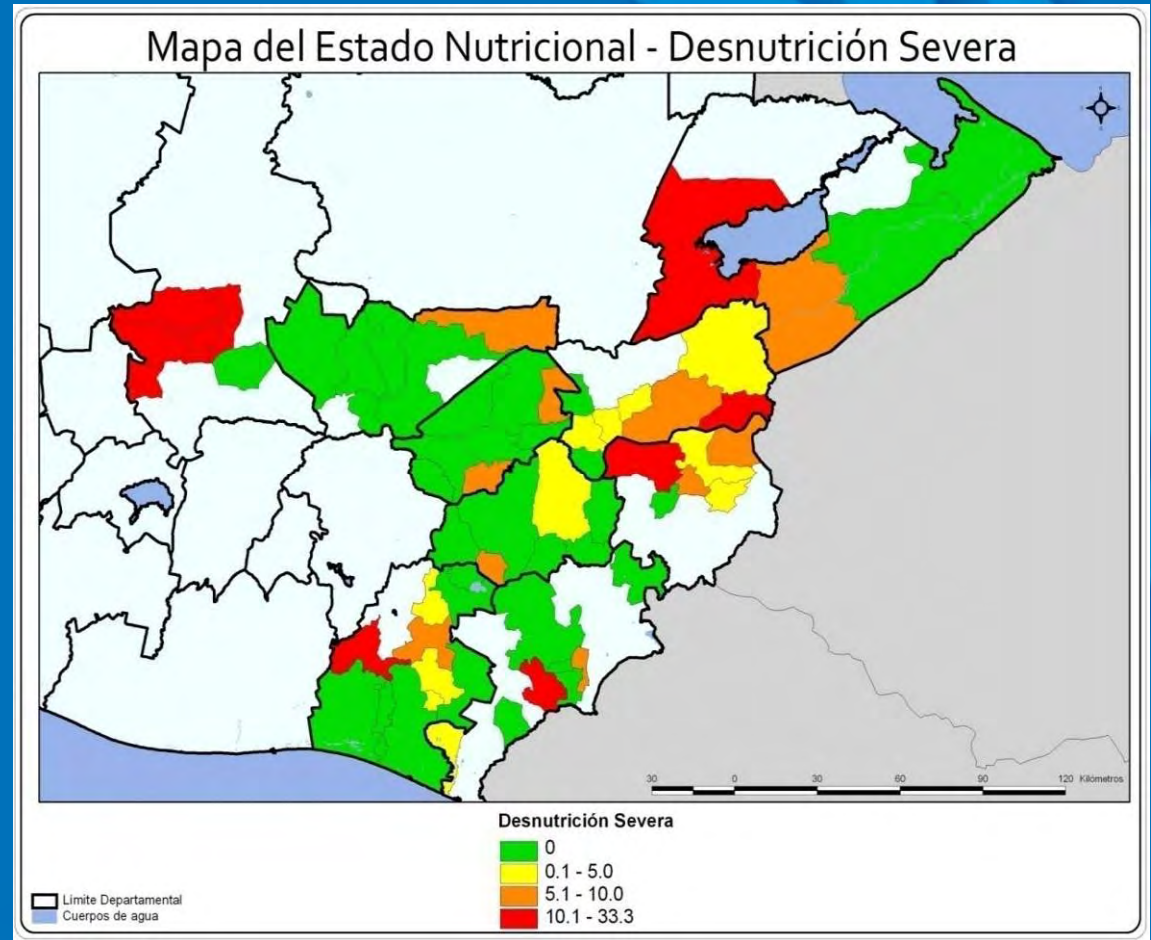
**Number of beneficiaries:** **136,000 families**  
**Duration:** **6 months**  
**Total:** **US\$34,4 million**



# Geographic Intervention Area Dry Corridor “Plus”

1. Baja Verapaz
2. Chiquimula
3. El Progreso
4. Quiche
5. Izabal
6. Jalapa
7. Jutiapa
8. Santa Rosa
9. Zacapa

*HNT 1st. Rapid Assessment  
as 2009*





# Detailed Clusters

Cluster	Beneficiaries	Amount Requested	Cluster Lead by Sector	Humanitarian Implementing Partners
<b>Agriculture</b>	22,000 families	5,542,000.00	FAO	MAGA+ UNDP + HCT
<b>Food</b>	47,000 families	13,928,555.00	WFP	SESAN + MAGA + MOH + Plan Internacional + Action Against Hunger
<b>Health</b>	201, 853 people	5,780,222.00	PAHO	MOH + Plan Internacional + Save the Children-USA + ICU + CISP + SESAN +UNFPA
<b>Nutrition</b>	80,000 families	4,000,000.00	UNICEF	MOH + CARE + World Vision + Plan Internacional + SHARE
<b>WASH</b>	50,000 families	2,240,000.00	UNICEF	MOH + HCT
<b>Early recovery</b>	50,000 families	2,354,000.00	UNDP	CONRED + SESAN + SEGEPLAN + Municipalities + HNT + FAO



# Agriculture

---

## Objective and activities:

Recovery of livelihoods involving  
distribution of seeds and fertilizers,  
installation of small artesanal  
compensatory irrigation schemes

Distribution of farm animals  
and inputs, organic compost production

Tree nurseries



Number of projects: 4



# Food

---

## Objective and activities:

Save lives and protect livelihoods involving therapeutic and general food distribution



Number of projects: 1



# Health

## Objectives and activities

**Early detection of acute malnutrition among children under 5 years, specially under 3 years, women in reproductive age with emphasis of adolescents, pregnant women and nursing mothers**

**Rapid and effective medical and nutritional care of detected cases of acute malnutrition and its complications, by health services of the Ministry of Health.**

**By implementing an active surveillance system, providing clinical management and correct use of protocols and guidelines .**

**Number of projects: 1**





# Nutrition

---

## Objective and Activities

Direct nutrition interventions at the community level to save lives of children under 5 years and women in reproductive age with acute malnutrition, providing nutrition products, timely and active case finding, sharing information, education and communication tools with emphasis on raising awareness.



Number of projects: 1



# **WASH**

---

## **Objective and activities**

**To provide safe water and sanitation, involving the provision of chlorine and bleach tablets, supplies for safe water consumption, monitoring system, cleaning and disinfection wells, products for personal hygiene, and support for adequate solid waste disposal.**

**Number of projects: 1**





# Early Recovery

---

## Objective and activities

**Provide support to families to enable the transition from the emergency to early recovery by reestablishing their subsistence resources and an income generation program.**



**Number of projects: 3**



**For further information  
please visit:**

**<http://ochaonline.un.org/humanitarianappeal/>**

**[www.reliefweb.int](http://www.reliefweb.int)**

**[www.ochaonline.org](http://www.ochaonline.org)**

**[www.redhum.org](http://www.redhum.org)**

**[www.onu.org.gt](http://www.onu.org.gt)**

**[www.guatemala.gob.gt](http://www.guatemala.gob.gt)**